

5777 Sienna Parkway, Suite #400 Missouri City, TX 77459

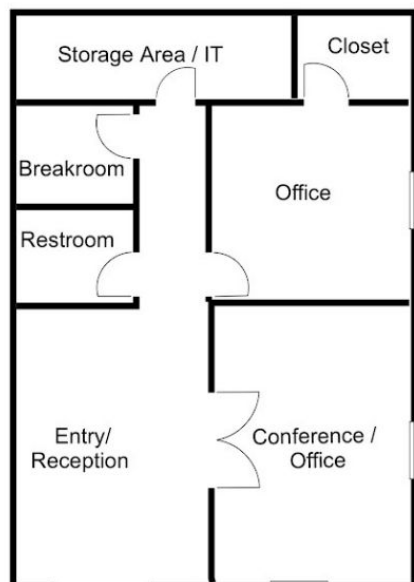


- Square Feet: 959
- Base Rent: \$22.00 per sq ft = \$1,758.16
- NNN: \$12.50 = \$998.96
- Total Monthly: \$2,757.12

Building Amenities

Professional building located at Sienna Parkway in the prestigious Sienna Plantation area.

Home of the Sienna Plantation Information Center
Easy Access to Highway 6 and the Fort Bend Toll Road



Contact us at:
281-240-4414
or visit us at

www.westportcommercial.net